

TAFE^{NSW}Western
Sydney
Institute

oten

OTEN
Certificate IV

Optical Dispensing

TAFE NSW Course Number: HLT47815-01V01-GR**National Course Code:** HLT47815**Training Package:** HLTR2.0 Health**Skills List:** ✓

This training is subsidised by the NSW Government

(TAFE NSW – Open Training and Education Network, Provider Code: 90004)



Course description

This qualification reflects the role of optical dispensers who dispense and supply optical appliances as prescribed by optometrists and/or ophthalmologists in accordance with Australian standards. Optical dispensers practice in a range of environments including optical dispensaries, optometric practices and laboratories. They may be self-employed or employed by another optical dispenser, an optometrist, a major optical dispensing company or other retailers. To achieve this qualification, the candidate must have completed at least 100 hours of work as detailed in the Assessment Requirements of units of competency. No licensing, legislative, regulatory or certification requirements apply to this qualification at the time of publication. Note this qualifications supports industry accreditation as adispensing optician in New Zealand.

We highly recommend you complete a personalised career and study profile to confirm this course is right for you, you will find the Career Voyage link below.

To ensure you leave us with the most up to date qualification...

If during or after your enrolment, the course in which you are enrolled is updated in line with national industry standards, the Institute reserves the right to transition you into an alternate course. If this becomes necessary, the Institute will advise you of the change and the arrangements which will be available for you to complete your alternate course.

What are the entry requirements? (including Recognition of Prior Learning)

There are no entry requirements for this qualification

Credit (or recognition) for modules/units may be granted based on previous learning, studies, work and/or life experiences. For more information on Credit for this course please refer to '[if you have the skills, get credit for a unit or this course](#)' on the OTEN website.

<http://oten.tafensw.edu.au/cbstgk>

Please note: Some industries have their own legislative or licensing requirements. TAFE NSW recognition does not apply to these.

Other requirements

WORK PLACEMENTS

oten

1300 362 346 or (02) 9715 8333

oten.tafensw.edu.au



Many TAFE courses have a compulsory work placement component to assist you to apply your learning in a practical environment and you may be required to comply with some (or all) of the following.

1. NSW HEALTH

Before you commence any clinical placements in NSW Health facilities, you will be required to • Meet NSW Health's - Criminal Record Check requirements;

- Sign the NSW Health Code of Conduct form and any other forms, as required by NSW Health;
- Undertake Occupational Assessment, Screening and Vaccination against Infectious Diseases and provide your Health Care Worker/Student Vaccination Record Card.

For specific information regarding NSW Health's requirements, and access to the required forms, it is recommended that you visit their FAQs for students at:

http://www.health.nsw.gov.au/careers/student_clearance/pages/default.aspx

2. AGED CARE WORK - Before you undertake any clinical placements in Aged Care Facilities you will be required to undertake a Federal Criminal Record Check. Visit:

<http://www.afp.gov.au/what-we-do/police-checks/national-police-checks.aspx>

3. COMMUNITY AND CHILDREN'S SERVICES

Anyone in child-related work (including student placements and volunteers) MUST have a current Working with Children Check (students/volunteers free) in line with the Office of Children's Guardian phase-in schedule and processes. Visit:

<http://www.kidsguardian.nsw.gov.au/Working-with-children/working-with-children-check>

4. STUDENT READINESS FOR WORK PLACEMENT Generally work placements will only occur after there has been a reasonable amount of student/teacher contact and when the teacher is satisfied that you are ready to benefit from workplace learning and perform workplace duties. Your teacher can provide further information.

STUDENT RIGHTS AND RESPONSIBILITIES - For more information visit:
<https://www.tafensw.edu.au/courses/rights-and-responsibilities/index.htm>

Under 17 and wanting to leave school?

If you are under 17 and want to leave school, your options have been affected by a recent change in NSW law. From January 2010 you must complete Year 10 and then continue in either full-time education, training, paid employment or a combination of these options until you're at least 17 years of age. More information about options for school students under 17 is available from our website:

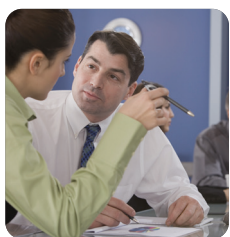
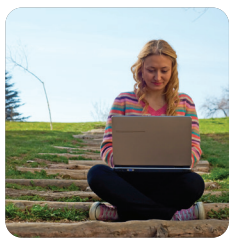
oten.tafensw.edu.au/under17

Pathway to university or higher education

Thinking of studying next year? Not sure if you should go to TAFE or uni? Let us help you decide. At TAFE NSW - Western Sydney Institute we offer you the flexibility to fast-forward your career with Pathways.



oten



Choosing to study at TAFE before going on to uni can see you graduating and entering a competitive workforce sooner — and not with one, but two, nationally recognised qualifications! For more information visit oten.tafensw.edu.au/uni

What are the units I am required to complete?

- BSBADM307 – Organise schedules
- BSBADM311 – Maintain business resources
- BSBCUS301 – Deliver and monitor a service to customers
- BSBLDR402 – Lead effective workplace relationships
- BSBSMB403 – Market the small business
- BSBSMB404 – Undertake small business planning
- BSBWOR404 – Develop work priorities
- CHCCOM005 – Communicate and work in health or community services
- CHCDIV001 – Work with diverse people
- HLTINF001 – Comply with infection prevention and control policies and procedures
- HLTOPD001-GRADED – Provide advice on optical appliances
- HLTOPD002-GRADED – Dispense optical appliances
- HLTOPD003-GRADED – Dispense atypical prescriptions
- HLTOPD004-GRADED – Edge and fit ophthalmic appliances
- HLTOPD005-GRADED – Process and manage optical appliance orders
- HLTWHS001 – Participate in workplace health and safety
- SIRXSLS201 – Sell products and services

The above list includes units being offered at OTEN and that are required to complete this qualification. Other TAFE NSW colleges may offer different elective options. If licensing in another State other than NSW is required, please check requirements with the relevant State.

Do I need additional resources to study this course?

You will be required to purchase textbooks. Please see form listed under "resources" on this course page for details and how to order.

How much is the course?

Smart and Skilled Student Fees

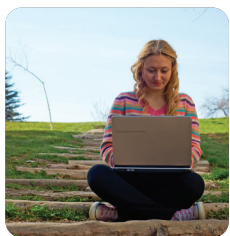
The cost of this course will vary based on your eligibility for a Smart and Skilled Student Fee. Eligibility criteria can be found on the Smart and Skilled website or you can call us on 131 870 for further information and advice.

First qualification	\$1970
Second qualification	\$2300
Concession	\$240
Non-government subsidised fee	\$6280

For full details on TAFE NSW fees and money matters please visit our website: oten.tafensw.edu.au/fees

How do I enrol?

oten



Enrol now (click below)
oten.tafensw.edu.au/mbstgk

I would like to talk to someone before I enrol

Please contact OTEN Customer Service 131 241

We are committed to enhancing all students' prospects to reach their potential and achieve a positive future. We recognise that for some students additional support services are fundamental to ensure success. We have the following expert support services available which you may access by calling (02) 9715 8446 or 1300 655 993 to make an appointment: Counselling and Career Development, Disability, Aboriginal, Multicultural, Outreach, Adult Basic Education and Open Learning Centre Support Services.

Need help deciding?

Our free online career and study planning tool can help.

You will receive a personalised career and study profile based on your responses. If you would like to discuss your results in person, please contact our Counselling and Career Development Unit by calling 1300 655 993 or 02 9715 8446. To get started click the link below:

<http://www.careervoyage.com.au/oten>

Unique Student Identifier (USI)

From 1 January 2015, all students participating in Nationally Recognised Training in Australia will need to have a Unique Student Identifier, or USI.

This includes students completing an apprenticeship, skill set, certificate or diploma course.

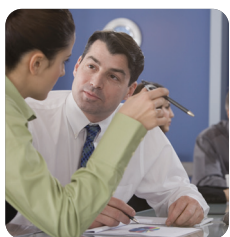
A USI gives you access to your online USI account and will contain all of your nationally recognised training records and results from 1 January 2015 onwards. Your results will be available in your USI account in 2016.

When applying for a job or enrolling in further study, you will often need to provide your training records and results. One of the main benefits of the USI is that you will have easy access to your training records and results throughout your life.

How to get a USI

It is free and easy for you to create your own USI online at usi.gov.au. Your local Customer Service office can also provide further information and assistance. If you already have your USI you can enrol with TAFE WSI.

Current as at 8/8/2016



oten